



Laboratories

Jestico & Whiles
Sheppard Robson
Allies & Morrison
HDR Architecture

Forum

Brian Dillon on ruin-lust,
Chris Wilkinson on drawing,
Neil Davidson on landscape,
learning from Ron Herron

Works

Diller Scofidio & Renfro in LA,
Ushida Findlay and Simpson &
Brown in York, Make in the City

Focus

Envelope: Broadway Malyan,
Simpson Haugh, Studio Weave



Design in Detail

SCHÜCO
steel systems
JANSEN

Situated at the junction of Westbourne Grove and Queensway in Bayswater, west London, Queens is a former 1930s cinema that has been turned into an exceptional, high-quality mixed-use development. Completed in October 2014, it comprises 16 residential units, nine parking spaces and 250 square metres of retail space.

Designed by Stiff & Trevillion Architects, the building retains its distinctive original art deco facade behind which lies a new concrete-framed structure. With the emphasis firmly on quality from the planning stage, Schueco was specified throughout for the doors and windows.

Schueco Jansen's Economy 60 steel system with its impressive flush-fitted design was selected for the shopfronts and was overclad in stainless steel. The residential entrance doors (with concealed hinges) and the side screens used Economy 60 in bright polished stainless steel to complement the building's art deco aesthetic. Bespoke interlayers, bonded onto the glass, create a decorative lattice pattern.

Internal doors in the lobby area utilise the Economy 50 stainless steel system. These too are polished and meet the fire safety requirements for a single-staircase building. In addition, Janisol Arte, the slimline highly insulated renovation window, was chosen to provide secondary glazing to the exterior stained glass.

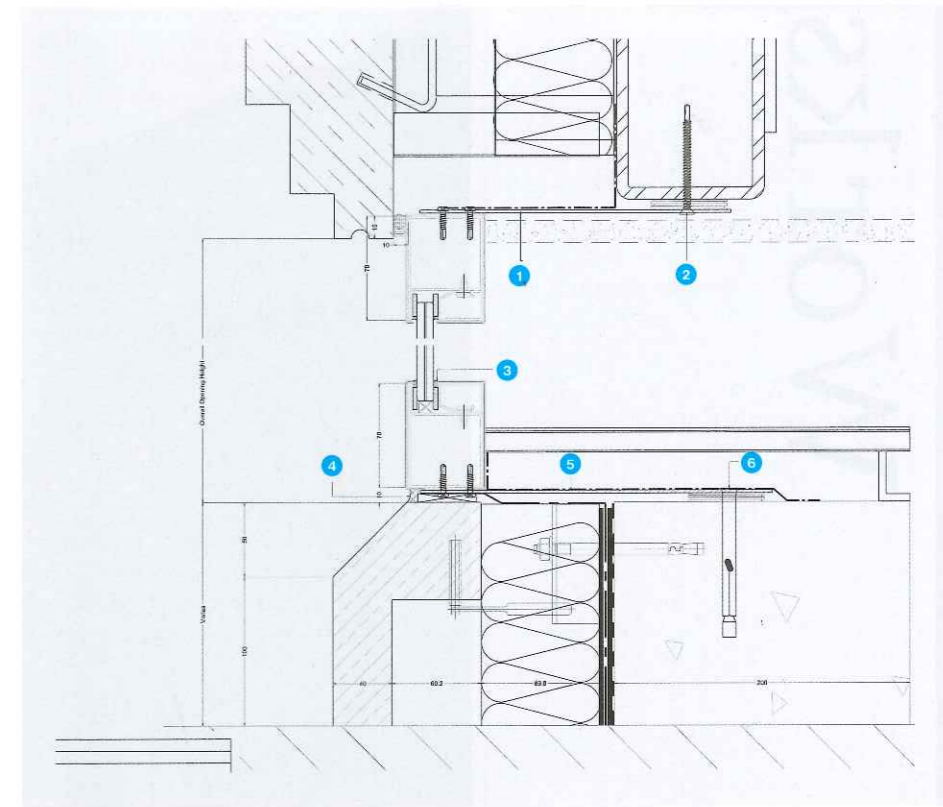
The Queens building is compliant with the Code 4 guidelines for Sustainable Homes and Lifetime Homes, making it a benchmark for other developments in this part of London. To this end, the windows, doors and sliding doors in the upper residential floors utilise highly-insulated Schueco aluminium systems.

The Jansen doors, together with a polished stainless steel canopy and backlit 'Queens' sign (in reference to the Savoy Hotel), make the main entrance particularly attractive. What also sets this development apart is the decision by developer Derwent London to sell to the local market rather than overseas buyers in an effort to ensure that this remains one area of the capital where Londoners still live and work.



Key

- 1 2mm continuous galvanised steel fixing bracket
- 2 6mm zinc pozitek screw shimmed to suit
- 3 Glass packed with 5mm glazing tape and top capped with black silicone
- 4 Perimeter gap capped with non-leaching black silicone
- 5 2mm galvanised steel fixing angle bracket
- 6 Concrete anchor shimmed to suit.
- 7 2mm stainless steel channel to hide gap between door and travertine
- 8 4mm foam glazing tape top capped with black silicone
- 9 Pull handle
- 10 16mm plywood board fixed to mild steel angles using wood-to-metal self-drilling screws
- 11 EIC pattress for Antron black box
- 12 4mm black painted 'reeded' glass bonded to 16mm plywood

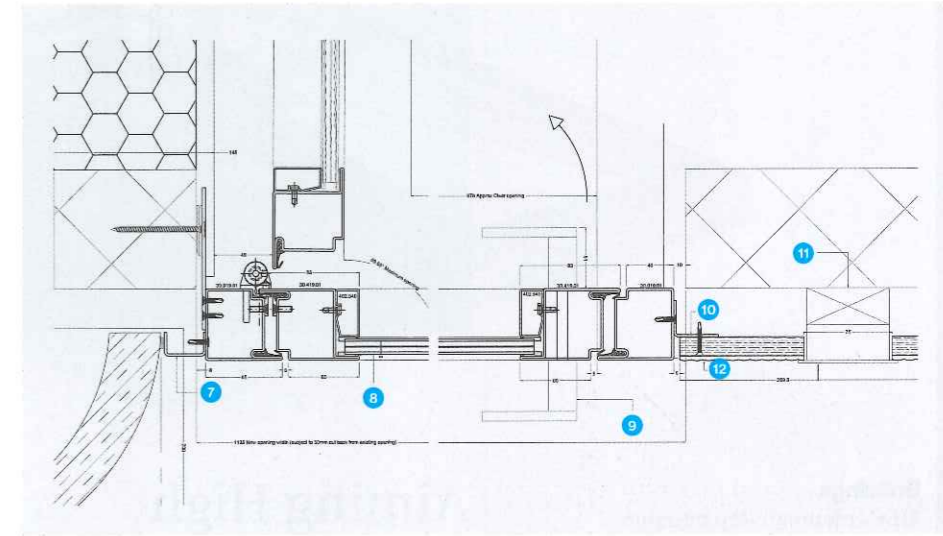


Top right
Detail section through shop front.

Right
Plan detail of lobby door.

Below right
Plan detail of window.

Photos: Killian O'Sullivan



Project Team

Architect
Stiff + Trevillion

Client
Derwent London

Main contractor
McLaren Construction

Specialist steel contractor
Propak Architectural Glazing

Specialist aluminium contractor
Structura (UK)

Schueco Jansen steel systems
Economy 60, 50 doors and screens
Janisol Arte windows

Schueco aluminium systems
AWS 70.HI windows
ASS 70.HI sliding doors
ADS 70.HI doors

Schueco Jansen
01908 282111
www.schueco.co.uk

